

‘This is what I dream the Twin Streams to be like. Pollution free so tourists can see my country as special.’

Kayleigh used blue and green to show the streams and put in some colours she called happy colours.

Kayleigh
Born NZ
English/
NZ European



Have you seen an eel in a stream? Can you see the train coming through in Kayleigh's picture?



'I like mostly everything green. More plants equal less pollution.
The trees we planted have grown really big now.'

Madeleine drew a fantail in the middle of her picture. She drew people joining hands to make the world pollution free, and a heart sign.

Madeleine

Born NZ
Fijian/
NZ European



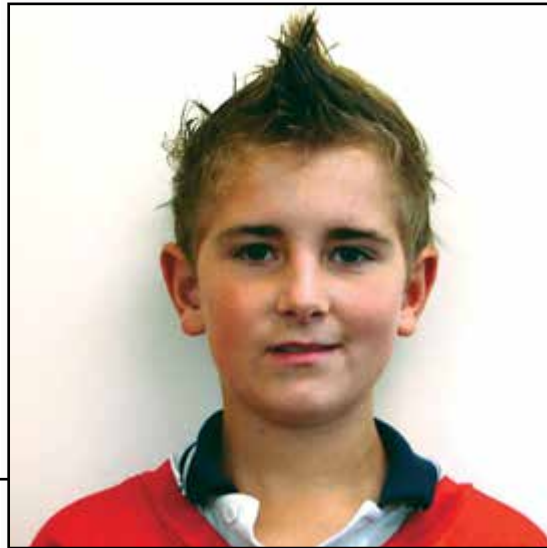
Can you see the light blue wind blowing through the flax bushes?



‘The rivers are yuck right now, but people are trying to change the rivers. The people in the city need to help make the rivers clean.’

Dayffyd drew the rising sun to symbolise a new, clean beginning for the river, with little plants along its banks. to stop the mud slipping into the water.

Dayffyd
Born NZ
Maori/
NZ European



Can you find something in Dayffyd's picture that fits with his Maori background?



Amirah: 'I like visiting places near water and I liked the opportunity to plant trees.'

Amirah drew the bridge in her picture because it was close to where she planted her trees. Her sun symbol represents the hot, sunny weather she remembers in Fiji.

Julie-Anne worked on this picture with Amirah. It was her idea to draw the picket fence.

Amirah

Born Fiji
Fijian/
American

Julie

Anne

Born NZ
Maori/
NZ European



What can you see when you look down on a stream from a bridge?



‘More trees are important for clean air, so we can breathe. Me and my Dad go for walks. It’s quiet.’

The detailed patterning that Tyrone has drawn on the left side of his picture represents Samoan body tattoo patterns. Tyrone put the x patterns on his green river because it is like the x on his Xbox.

Tyrone
Born NZ
Samoan/
NZer



What other colours can a river be? Can you see someone paddling a canoe?



'I would like to go fishing but I have never been because the river is too dirty.'

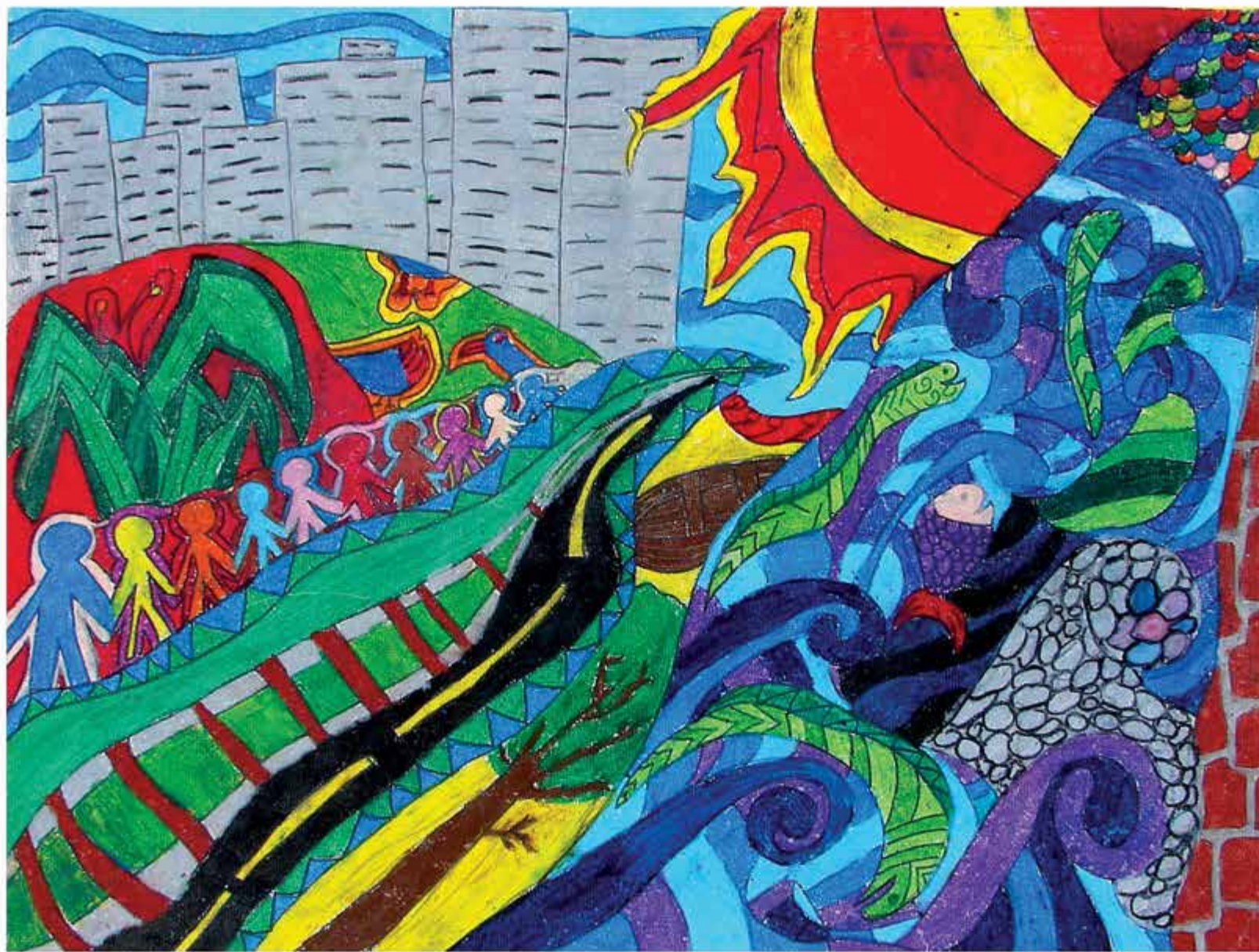
Lorenzo has drawn a brilliant yellow/orange sun shining on the native bush. The big city is along the skyline.

Lorenzo

Born NZ
Niuen/
NZ European



Can you name some native trees?



'I always go down to the stream. I walk in the bush and make huts. I have seen eels there.'

Nathaniel drew people united to save the stream. He wants to see the stream made clean and beautiful again. The people are all different colours to represent different cultures.

Nathaniel

Born India
Indian



How many friends from different cultures do you have?



'I like how peaceful nature is. I saw someone fishing. If people didn't fight this would be the best place on earth.'

Tyler used grey and blue colours for the upper half of his picture, to represent a dull city. The bottom half is all colour, all nature.

Tyler
Born NZ
English/
NZ European



What colours has Tyler used to represent nature?



‘The river could be a holiday place, but it can be dirty round on the grass. I felt sad and disappointed seeing the rubbish.’

Kalyana comes from an Indian background. She drew a yellow bridge over the stream. Just before the bridge you can see the Indian symbol for helping and caring, repeated three times.

Kalyana
Born NZ
Indian/
NZer



Can you see Kalyana's sun symbol curled like a snail in the picture?



James: 'I liked all the plants and creatures. When we planted the trees we found some kauri gum.'

Albert: 'All the wildlife is important to me. I want it clean so there will be more birds.'

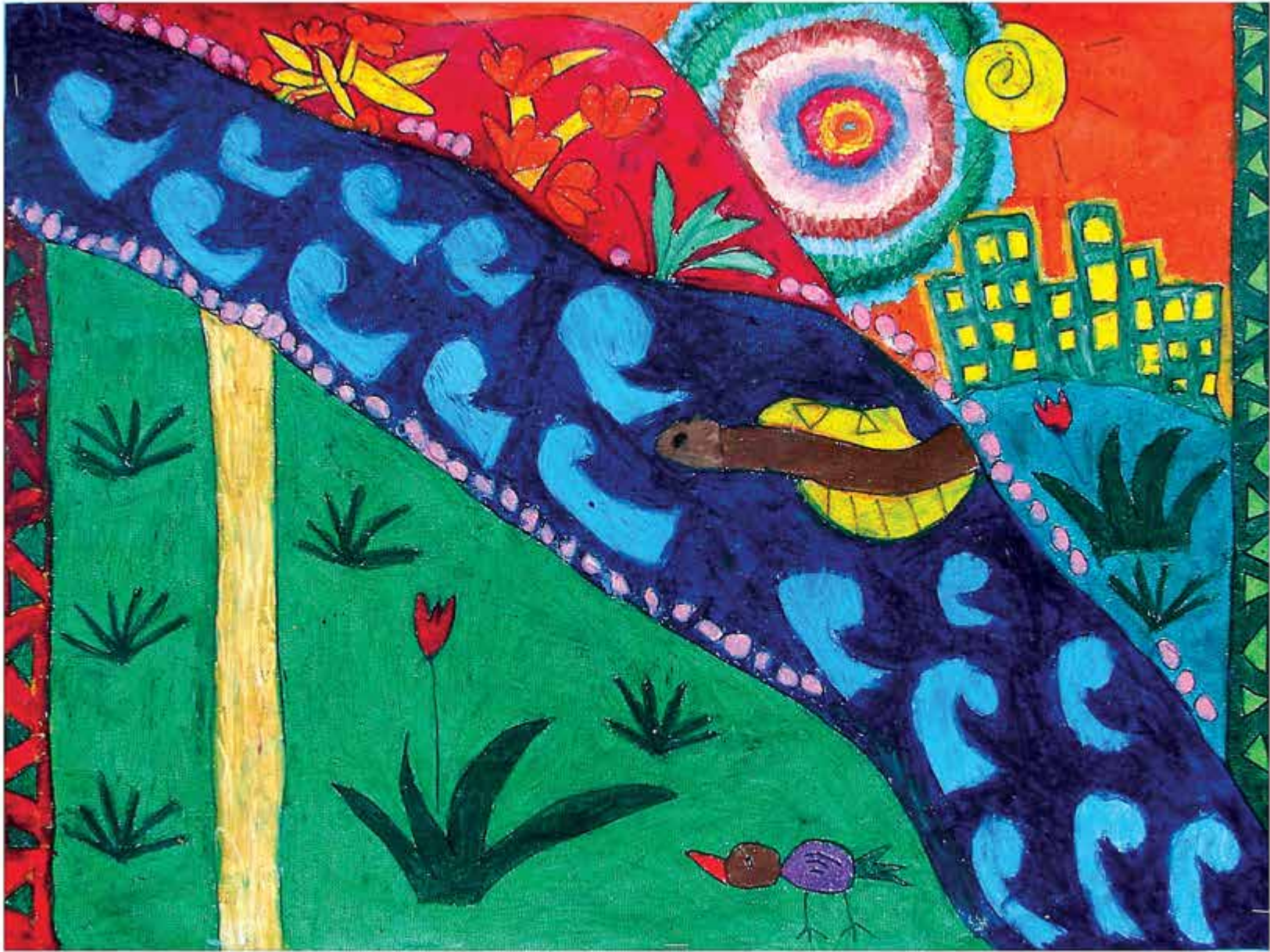
James and Albert worked on this picture together. They drew lots of fish to represent a clean river, and a pohutukawa tree in flower.

James
Born NZ
English/
NZ European

Albert
Born NZ
Chinese
NZer



Can you see the pukeko with her eggs, and the insects Albert drew above her for her to eat?



Stevie: 'My group planted twenty six trees. I saw them one year later and they had doubled in size.'

Savannah: 'Doing the planting was the most important thing for me.'

Stevie says the starburst at the top of the picture represents new life with all the plants.

Savannah

Born NZ
Samoan/
Cook Island/NZer

Stevie

Born NZ
Maori/
NZ European



Can you see a kauri tree with a really tall trunk and no leaves?



Ayeesha: 'There were heaps of birds.'

Elyse: 'I go bike riding a lot there. The water is less muddy now.'

Ayeesha drew yellow kowhai because it flowers around the time of her birthday in September.

Ayeesha
Born NZ
Fijian/
NZer

Elyse
Born NZ
NZ/European



Do you know any plants that flower in your birthday month?



'I saw an eel. Pollution is bad because it kills the birds, eels, and plants.'

Toni showed the city's pollution in brown seeping into the blue stream. She drew red placards protesting against pollution. They are next to the sun.

Toni
Born NZ
Filipino/
NZer



What can we all do to stop pollution in the stream?



‘The place is a nice place for the community. I go for walks there.’

Claudia likes the idea of people working together to save the stream, so she included the word community. Claudia has added two windmills to her picture because she likes windmills. They have orange spiral tops.

Claudia
Born NZ
Chilean/
NZ European



Who makes up your community?



'I thought about the sun shining on the river. I thought about waterfalls and eels and little fish.'

Matthew drew the powerlines, all wires, and the railway tracks, which he felt made the place less beautiful.

Matthew

Born NZ
NZ European



Can you see Henderson township behind the tree? Can you find the New Zealand flag that Matthew included because he is proud he was born in New Zealand?



'I want the river to be free of pollution for the fish and animals to live in harmony.'

Ryan wants to encourage families to picnic beside the river so he included a picnic table in the centre of his picture.

Ryan
Born NZ
Filipino/
NZ European



What would you take on a picnic to the stream?



Robert: 'We took turns digging and planting, and got ourselves dirty. I drew the sun red and hot. The sun is to do with Samoa because it is really hot there with hardly any rain.'

Nigel: 'I saw mangroves and trees. I liked it by the bridge but I did not like the greenish water.'

Robert and Nigel worked together. They put in grey crosses to represent the Christian faith. Nigel put in the road safety signs.

Robert
Born NZ
Samoan/
NZ European

Nigel
Born NZ
Fijian/
NZer



Which symbols in this picture represent the city?



'I saw bugs on the ground and on the trees when we were doing the planting. I liked the river because it was very peaceful.'

Olivia put a rainbow in her picture to represent different cultures working together for a happy community.

Olivia
Born NZ
Tongan/
NZer



What symbols can you see that represent Olivia's culture?



'Our streams need to be clean. I go with my cousin for walks there. Some of the trees I planted are growing.'

The blackness in the centre of Khelsey's picture represents pollution. The yellow square represents tapa cloth from Niue where Khelsey's Mum and Dad are from.

Khelsey
Born NZ
Niuen/
NZer



Which shape do you think represents a bridge?



'I drew a pukeko because they live round rivers and native plants, and I love their colours.'

Gabrielle drew the red symbol at the bottom of her picture to represent New Zealand and its different cultures. She got the shape from trees and plants.

Gabrielle

Born NZ
NZ European



Can you find the path to the picnic area? Gabrielle said she drew it like tiles in flower colours.



Lucy: 'I love all the green in New Zealand. Very beautiful. In Korea it is all apartments and motorways.'

Khailan: 'We drew a group of children holding hands on the bridge over the water, to represent Waitakere.'

Lucy is an exchange student from Korea. She did koru symbols to represent big and little waves in the river.

Khailan

Born NZ
Kurd/
NZer

Lucy

Born Korea
Korean



Can you find the native bird in Lucy and Khailan's picture? What is the Maori name for the bird with the fan tail?



Paul: 'We have to help the stream so it won't get dirty. You can play sport there. We have to look after the environment otherwise the earth won't be good.'

John: 'I came to New Zealand last year. The river here is smaller.'

Paul and John worked together on this picture. Paul drew the big eel and John helped with the colouring in.

Paul
Born NZ
Chinese/
NZer

John
Born Korea
Korean



What games could you play by the stream?



'At night you can see the stream glowing in the moonlight. It would be cool if kiwi birds came back.'

Emanuel has used strong reds and blues because they are colours that represent his Croatian background.

Emanuel
Born Croatia
Croatian



Find Emanuel's Skytower among the skyscrapers. Do you know how tall Auckland's Skytower is?

TOP



'It is calm and refreshing by the river. It cools you down. You feel free.'

Sharlene learned how to dig for the first time. The kauri trees were her favourite trees. Sharlene put three yellow hibiscus flowers in her picture and the Samoan flag to represent her cultural background.

Sharlene

Born NZ
Samoan/
NZer



Do you see the flag?

TOP



'I walk home that way. I want people to keep it clean. Don't just chuck wrappers and stuff. Plants look better.'

Jessie's picture has three things in it that symbolise Niue...a large orange flower, a palm tree, and a performance costume.

Jessie
Born NZ
Niuen/
NZ European



Can you see the grass skirt and the coconut shell top?

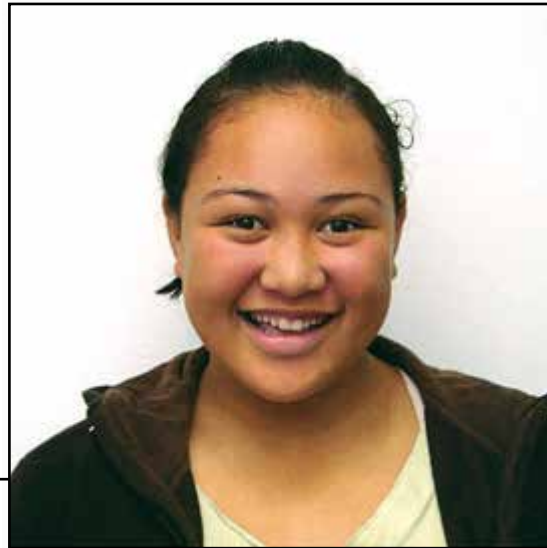
TOP



'We need to plant more trees to make the environment look nice. Without them it would be polluted.'

Angela has included a pink hibiscus flower and an island pattern at the bottom left of her picture to represent her Samoan background. Angela has drawn a pohutukawa flower too.

Angela
Born NZ
Samoan/
NZer



The pohutukawa is also known as the New Zealand Christmas tree. Do you know why?

TOP



'I planted kahikateas. I like to walk there with my sisters because it looks cool. Good people are doing something about pollution now.'

The symbols Caroline included were blue koru along the stream, the New Zealand flag, and the silver fern.

Caroline

Born NZ
Maori/
NZ European



What other creatures can you see in Caroline's picture?